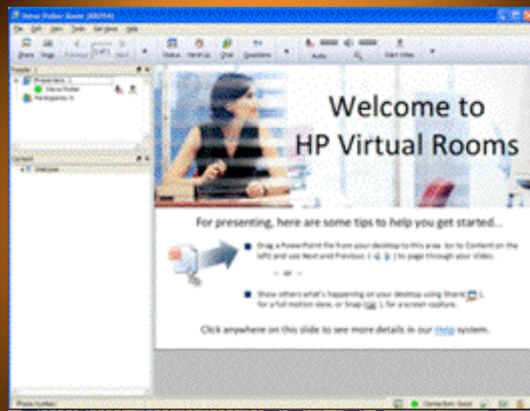


# HP Virtual Rooms

Connect from anywhere with Internet access to host team meetings, customer briefings, and training events in one convenient online location.



## What are HP Connect Solutions?

Technology makes reaching out to business associates easy and efficient. But it takes a sense of shared experience to make those encounters rich and meaningful. HP Connect Solutions unite technology with shared experience through solutions designed to put the personal back into your connections and collaboration.

With HP Connect Solutions, you can reach out instantly and effortlessly, any time that's convenient. You can communicate with more impact through the visual power of interactive video conferencing. You can collaborate more effectively through online meetings where everyone can see the same documents and interact together. And you can secure and share your data so all your business contacts can access the same information from anywhere.

## Connect, collaborate and do more for your business

Of these solutions, HP Virtual Rooms is an online meeting place for collaborating with team members, business partners, and customers. Invite participants from across town or across the country. When you can't get together in person, it's an efficient and affordable way to meet.

## Powerful features for maximum effectiveness

- Convenient, easy-to-use interface
- Flexible scheduling and easy access to meetings using custom generated web links or "quick keys"
- Microsoft® Outlook integration for scheduling meetings and sending invitations
- In-room video and audio to enhance personal interaction
- Application and desktop sharing
- In-room document storage for easy access
- Persistence of room content between meetings
- Content organization and management tools to facilitate the presentation of images from PowerPoint, Adobe PDF, web pages, and graphic files
- White-board and editing tools, such as font-formatting, cut/copy/paste, and highlighting tools to facilitate collaboration
- Private and group chat
- A Presenter profile area to create a "business card" containing picture and contact information
- Survey, question, and activity-timing tools to add variety to meeting agendas
- AES 256-bit SSL encryption to safeguard your confidential communication and information

# HP Virtual Rooms

## System Requirements

Resource	Requirements		Performance and reliability considerations
	For presenters	For participants	
<b>Internet network connection</b>	T-1 or greater Cable, DSL or equivalent broadband connection to Internet modem	T-1 or greater Cable, DSL or equivalent broadband connection to Internet modem 56K modem	Optimum Recommended Marginal
<b>Operating Systems</b>	<b>Microsoft Windows:</b> Genuine Windows® 7, <sup>2</sup> Genuine Windows® Vista, <sup>2</sup> Genuine Windows® XP, Genuine Windows® 2000 <b>Linux:</b> Red Hat Linux ES 3.0 (2.4.21), 4.0 (2.6), WS 3.0, WS 4.0; SuSE Linux 10 (2.6); Ubuntu 7.10; Fedora 5,6,7,8 and other Linux versions built from Core 2.4 and 2.6 kernels <b>Macintosh:</b> Mac OS X 10.4 or later	<b>Microsoft Windows:</b> Genuine Windows® 7, <sup>2</sup> Genuine Windows® Vista, <sup>2</sup> Genuine Windows® 2000 <b>Linux:</b> Red Hat Linux ES 3.0 (2.4.21), 4.0 (2.6), WS 3.0, WS 4.0; SuSE Linux 10 (2.6); Ubuntu 7.10; Fedora 5,6,7,8 and other Linux versions built from Core 2.4 and 2.6 kernels <b>Macintosh:</b> Mac OS X 10.4 or later	<b>Microsoft Windows:</b> Genuine Windows® XP Service Pack 1 required, Service Pack 2 recommended; Genuine Windows® 2000 Service Pack 3 required
<b>Processor</b>	<b>Microsoft Windows:</b> 300 MHz or greater <b>Linux:</b> 32-bit processor, 700 MHz or greater 64-bit processor, 1.5 GHz or greater <b>Macintosh:</b> 600MHz PowerPC or greater, 1GHz Intel or greater	<b>Microsoft Windows:</b> 200 MHz or greater <b>Linux:</b> 32-bit processor, 700 MHz or greater 64-bit processor, 1.5 GHz or greater <b>Macintosh:</b> 600MHz PowerPC or greater, 1GHz Intel or greater	Recommended
<b>Memory</b>	256 MB RAM	256 MB RAM	Recommended
<b>Display color</b>	<b>Microsoft Windows, Linux:</b> High color <b>Macintosh:</b> Millions of colors	<b>Microsoft Windows, Linux:</b> High color <b>Macintosh:</b> Millions of colors	Recommended
<b>Display resolution</b>	<b>Microsoft Windows, Linux, Macintosh:</b> 1024x768 <b>Microsoft Windows only:</b> 800x600	<b>Microsoft Windows, Linux, Macintosh:</b> 1024x768 <b>Microsoft Windows only:</b> 800x600	Recommended <b>Microsoft Windows only:</b> Marginal, scrolling of large content
<b>Audio via phone</b>	Phone headset	Phone headset	Recommended
<b>Web browser</b>	<b>Microsoft Windows:</b> Internet Explorer 6.0, 7.0, 8.0 <b>Linux:</b> Firefox 1.5 or later <b>Macintosh:</b> Safari 2.x	<b>Microsoft Windows:</b> Internet Explorer 6.0, 7.0, 8.0 <b>Linux:</b> Firefox 1.5 or later <b>Macintosh:</b> Safari 2.x	Required. <b>Microsoft Windows Only:</b> ActiveX controls and VBScript must be enabled.
<b>Disk space</b>	<b>Microsoft Windows:</b> 20 MB free for installation <b>Linux:</b> 50 MB free for installation <b>Macintosh:</b> 40 MB free for installation	<b>Microsoft Windows:</b> 20 MB free for installation <b>Linux:</b> 50 MB free for installation <b>Macintosh:</b> 40 MB free for installation	<b>Microsoft Windows, Macintosh:</b> Administrator or Power User rights (or equivalent) required for software installation
<b>Audio and Video via the Web<sup>1</sup></b>			
<b>Audio via Web</b>	<b>Microsoft Windows:</b> Sound card PC headset with attached microphone PC speakers and PC microphone <b>Linux, Macintosh:</b> Not supported	<b>Microsoft Windows:</b> Sound card PC headset with attached microphone PC speakers and PC microphone A headset with no microphone - or PC speakers only <b>Linux, Macintosh:</b> Not supported	<b>Microsoft Windows:</b> Optimum Marginal (Ambient Noise) Marginal (Listen Only) <b>Linux, Macintosh:</b> Not supported
<b>Video via web</b>	<b>Microsoft Windows:</b> The HP Virtual Rooms solutions are compatible with most standard PC Web cameras <b>Linux, Macintosh:</b> Not supported  A size of 160x120 pixels is the default for HP Virtual Rooms video windows.		

**Languages supported:** Chinese, Czech, English, French, German, Greek, Hungarian, Japanese, Korean, Polish, Russian, Spanish and Brazilian Portuguese

- Activity which puts additional load on your network, such as a file download, application sharing, or audio and video over the Internet can impact your network performance. Consider your options carefully when deciding which activities should be done concurrently. Your hardware, network bandwidth and performance will determine overall audio and video quality.
- "Protected mode," has been implemented on Windows® Vista and Windows® 7. Sometimes this extra security can interfere with legitimate actions over the Internet. In order for HP Virtual Rooms to properly run in this environment, trust must explicitly be given the "\*.hp.com" domain. Please follow these directions to add "\*.hp.com" as a trusted domain to Internet Explorer:
  - From the Internet Explorer® Tools menu, select Internet Options.
  - Select the Security Tab.
  - Select the Trusted Sites icon.
  - Select Sites and add "https://\*.hp.com" to your list of trusted sites.



© 2010 Hewlett-Packard Development Company, L.P. The information contained herein is subject to change without notice. The only warranties for HP products and services are set forth in the express warranty statements accompanying such products and services. Nothing herein should be construed as constituting an additional warranty. HP shall not be liable for technical or editorial errors or omissions contained herein. Microsoft, Windows and Vista are trademarks of the Microsoft group of companies. To learn more, visit [www.hp.com](http://www.hp.com).

November 2009