



## HP Project and Portfolio Management Center Mobility Access

Data sheet

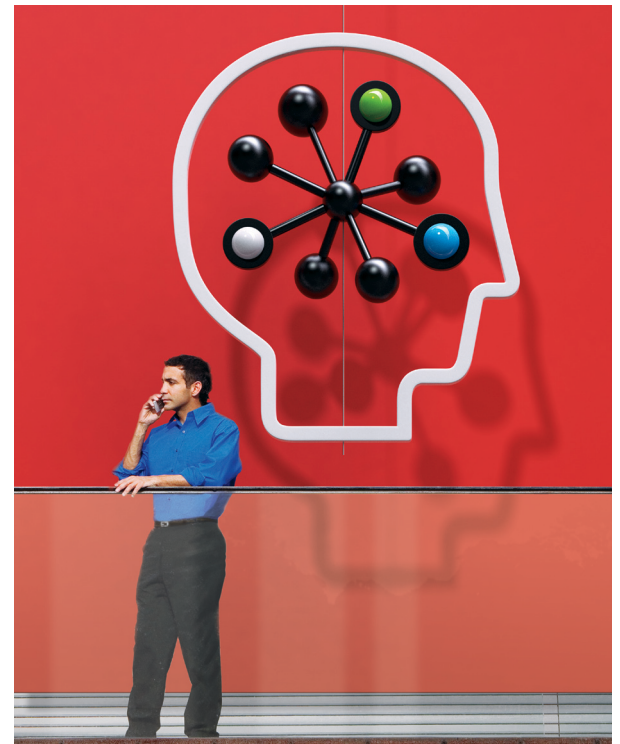
HP Project and Portfolio Management (PPM) Center Mobility Access is an HP PPM Center solution that enables project and portfolio management process approvals from a user's mobile or desktop e-mail.

IT executives and managers today need real-time visibility into the entire IT investment portfolio. Instituting better business process controls, improving portfolio prioritization, and implementing consistent quality practices—without breaking the budget or further burdening the staff—has become increasingly important in today's economic environment.

HP PPM Center software helps you address these challenges. It provides IT executives with real-time visibility into IT investment activities under evaluation or underway at any given moment. Stakeholders have the ability to step back to see which projects and programs are truly aligned with business objectives and prioritize accordingly. Additionally, HP PPM Center takes traditionally manual project and portfolio management (PPM) processes and automates them within the underlying HP PPM Center workflow engine. This expedites and increases the accuracy of information supporting the completion of PPM processes.

### Rapid response

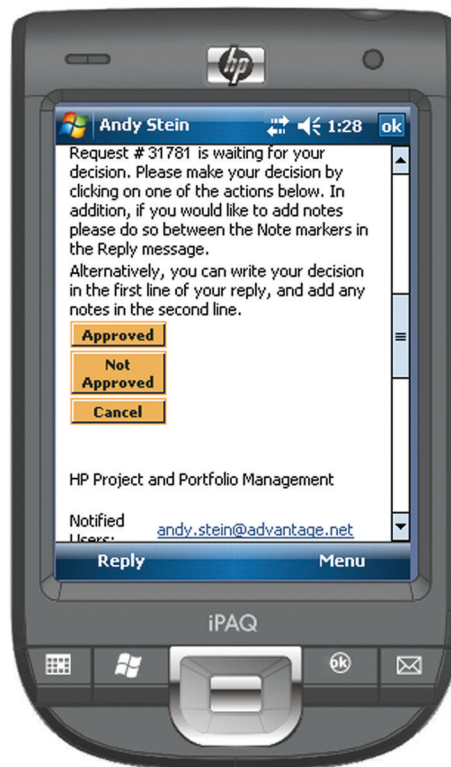
While HP PPM Center automates PPM processes, some organizations need an even faster response time for approvals and rejections. For example, the CIO's project teams need to make quick and effective decisions without being hampered by the physical location of key employees. This requires that IT managers and stakeholders have access to their own decision points at all times in order to move a project or critical decision forward. HP PPM Center Mobility Access software helps you and your project teams gain immediate access to decisions awaiting approval or denial—regardless of physical location.



### Secure collaboration

With HP PPM Center Mobility Access, an HP smart add-on, users are alerted via e-mail that they have a decision to make. Within the e-mail notification, actionable buttons can be used to immediately approve or deny a process request just as if a user was working within the HP PPM Center application. This helps shorten business process cycle times and improve real-time collaboration for all stakeholders.

HP PPM Center Mobility Access has advanced security features yet is flexible, and it supports any standard e-mail client including e-mails accessed via smart phone devices. With no virtual private network (VPN) requirements for remote users, HP PPM Center Mobility Access provides true mobility on any smart device that has e-mail access to the Internet.



## How HP PPM Center Mobility Access works

**Robust security:** HP PPM Center Mobility Access extends the workflow to a non-HP PPM Center environment with advanced security features. It does so by leveraging the native security and audit trail features within HP PPM Center. Only those users who have the permission to act on a specific workflow step will be granted access. It logs all e-mail notifications sent to users, tracks approvals at a user and field level, and preserves the user roles that are defined within HP PPM Center.

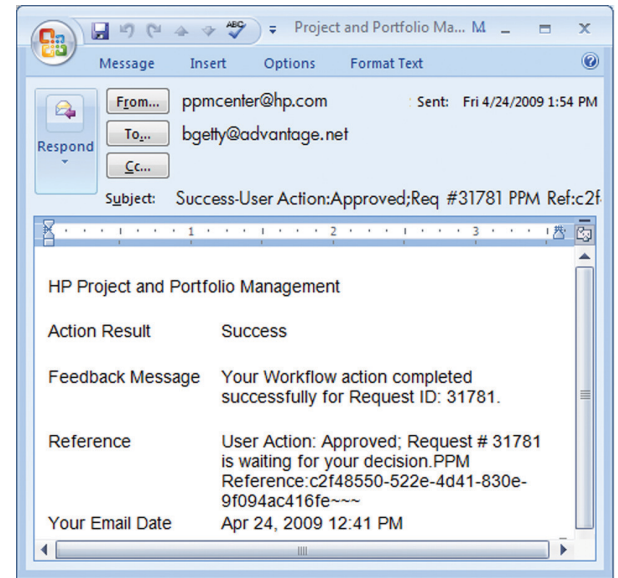
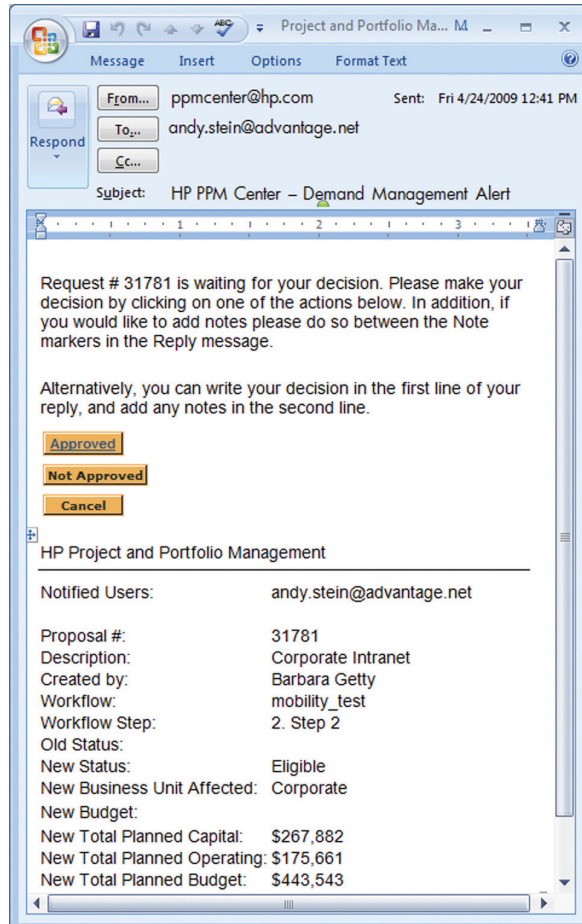
**Standard e-mail support:** HP PPM Center Mobility Access works out of the box with Standard Mail Transport Protocol (SMTP) and send-mail with POP3/IMAP support in e-mail clients and mail servers. The solution supports Microsoft® Outlook® clients and Microsoft Exchange Server. It also works with Gmail, Yahoo mail, AOL, and other commonly used e-mail clients for laptop and smart phone devices. Standard text and HTML e-mail formats are supported. Providing your e-mail client and mail server are set up with POP3/IMAP, no further configuration changes are needed.

**HP PPM Center action buttons within e-mail:** Upon receiving an e-mail, action can be taken by the stakeholder. HP PPM Center returns a confirmation message back to the requestor indicating the action was accepted by the system.

**Complete workflow support:** HP PPM Center Mobility Access supports all workflows and workflow transitions in any decision step in HP PPM Center. It enables the approver to provide comments and user notes associated with the action taken in the e-mail body. These notes are captured on the request in HP PPM Center as well, allowing for full traceability of actions taken on the specific request.

Additionally, the HP PPM Center administrator or project manager can configure steps within a particular workflow where e-mail approval functionality is required. It is as simple as selecting a checkbox "Enable Decision by E-mail" for that step. This provides flexibility for users to determine how they wish to receive and act on notifications throughout a business process.

**HP PPM Center action buttons within e-mail:** Upon receiving an e-mail, action can be taken by the stakeholder. HP PPM Center returns a confirmation message back to the requestor indicating the action was accepted by the system.



## Choose the installation option that is best for you.

HP PPM Center Mobility Access installs quickly, requiring your HP PPM Center Administrator to complete just a few steps to enable full functionality. This add-on software requires a license key to install and to configure. Additionally, HP Software Professional Service or a global partner can assist with this installation, although it is not required.

## Key features and benefits

- Process approval/deny actions available in real-time for mobile workers via e-mail
- Supports timely decision making and faster project execution regardless of employee location
- Leverages HP PPM Center security features to log and to track changes by smart phone and desktop e-mail users
- Easy-to-install configuration gets users started quickly and helps drive overall HP PPM Center adoption
- Enhances stakeholder collaboration and shortens time to value

---

This is an HP Indigo print.

## Technology for better business outcomes

For more information, go to [www.hp.com/go/ppm](http://www.hp.com/go/ppm)

© Copyright 2009 Hewlett-Packard Development Company, L.P. The information contained herein is subject to change without notice. The only warranties for HP products and services are set forth in the express warranty statements accompanying such products and services. Nothing herein should be construed as constituting an additional warranty. HP shall not be liable for technical or editorial errors or omissions contained herein. Microsoft and Outlook are trademarks of the Microsoft group of companies.

4AA2-6534ENW, May 2009

