

# HP Requirements Management

Data sheet

**HP Requirements Management module is a comprehensive, integrated solution for defining, managing, and tracking requirements at every step of the entire application lifecycle**

## Align your IT deliverables with business objectives

The way an organization defines and delivers software requirements is imperative to the success of an IT project and in turn the success of the business. Even though organizations have invested heavily in project management, development, and quality assurance; many projects still fail and these failures can often be traced back to poorly-defined requirements.

Defining and managing good requirements is a difficult task. Requirements emerge from an idea or as a business initiative, evolve through the definition phase, and often change through the delivery phase. To add to this challenge, there are many different people and groups involved through the requirements lifecycle. These groups are dispersed across different teams, business units, and geographies, and they need to collaborate and communicate clearly. The rapid adoption of Agile across organizations, means having good requirements is even more important.

To ensure excellent business outcomes, organizations need to address these challenges and recognize the need for better requirements. The right requirements management solution is needed to facilitate the management of the requirements lifecycle. The solution must:

- Be easy to use
- Facilitate a single “point of truth” for both visual and textual requirements
- Support collaboration between stakeholders to ensure the right thing is being captured
- Provide traceability between requirements and other development assets (test, defects, code, and the like)
- Enforce standardization to ensure consistency and quality between requirements

## About HP Requirements Management

HP Requirements Management is a robust, easy-to-use, Web-based solution that helps organizations define, manage, and control software requirements to meet the business needs. This solution is designed for use by Business Analysts (BA), Quality Assurance (QA), and development teams across the entire application lifecycle. Through accurate requirements and risk-based test management, development and testing teams are given clear visibility and can focus their efforts on high-priority business needs and also that the decisions to proceed are based on quantifiable business risk.

HP Requirements Management is a core module of the HP Application Lifecycle Management and HP Quality Center solutions. It allows distributed teams to collaborate and share requirements while they manage multi-dimensional traceability among requirements, tests, and defects across releases and cycles all within a single, centralized repository. Real-time visibility of requirements coverage and associated defects build confidence in go/no-go decisions.

## Key features and benefits

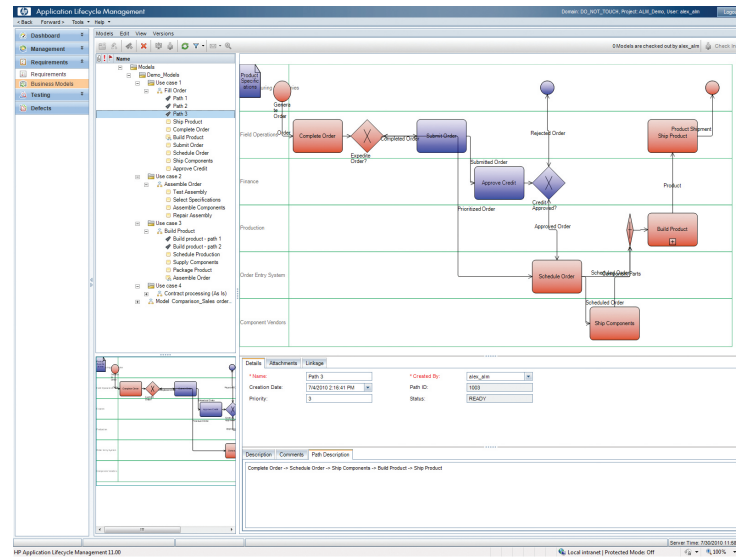
### **Capture different types of requirements**

One of the most critical roles in the requirements management process is that of the BA. BA's act as a liaison among project stakeholders to gather, analyze, communicate, and validate requirements related to new IT projects or changes to existing applications, processes, or policies. HP Requirements Management provides BA's and other key stakeholders with multiple preconfigured requirement types—from technical specifications to use cases. It also supports customizable requirements types to capture all levels of requirements and store them in the centralized repository, along with supporting attachments.



## Figure 1: Requirements Management

Link Requirements directly to Business Process Models improving requirements communication



### Standardize and control requirements capturing in a familiar environment

Maintaining consistency and quality of requirements is critical to avoiding inconsistencies, missed requirements, and high amounts of re-work. HP Requirements Management gives you the capability to standardize and control your requirements by enforcing customized templates and workflows to facilitate the capturing of a requirement in a consistent structure across your entire organization.

HP Requirements Management is a core module of the HP Application Lifecycle Management and HP Quality Center solutions.

If you prefer the familiar interface of Microsoft® Word, HP Requirements Management offers a rich content editor with the same functionality for data input as Microsoft Word allowing for rapid and easy adoption across your teams. Alternatively, you can import requirements from existing Microsoft Word or Microsoft Excel files. The document generator allows you to export your requirements into a custom Word Document file maintaining your structure, rich content, and traceability that meets your organization's needs.

### Graphically represent and map requirements to critical business process flows

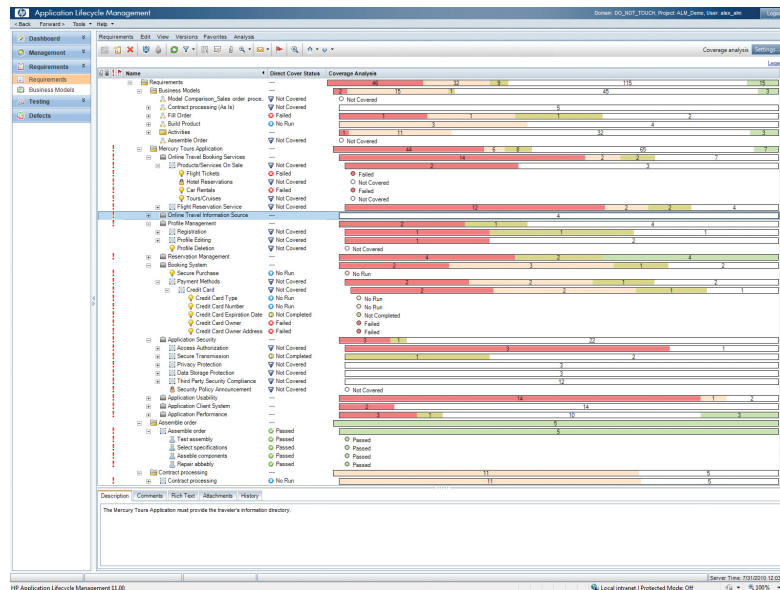
HP Requirements Management allows for business process models to be imported and displayed, visually representing and communicating defined business process flows. A requirements hierarchy is automatically generated and directly linked to objects within the business process models allowing for detailed drill down avoiding the risk of requirements duplication or oversight. Development and QA teams can use the visual representation of end-to-end scenarios within the models as key guidance to developing and testing the right thing. Business Process Models are becoming a key element in the elicitation and communication of requirements. HP Requirements Management delivers this capability as part of your application lifecycle management and quality management solution.

### Manage requirements with native version control and base lining

By storing the requirements in a centralized location and leveraging the native versioning capabilities in HP Requirements Management; BA's, developers, and QA can collaborate and share data without overriding each other's work, thus maintaining data integrity. Baselines can also be captured, including full traceability linkages, which help in making more informed decisions about when projects are ready to be moved to the next stage of the lifecycle.

**Figure 2: Requirements Coverage**

Gain accurate, real-time analysis of requirements coverage and readiness



### Establish requirements traceability

HP Requirements Management gives users the ability to specify and link requirements making it easy to establish and identify relationships between requirements. You can also tie requirements to test cases and code, thus establishing a traceable link to the corresponding requirement definition. Test cases can be auto-generated from a requirement, which reduces the time needed to build a test and enables the best possible coverage. The traceability capabilities also allow for test's pass/fail status and defects to be automatically linked back to the corresponding requirement giving you an accurate, real-time analysis of the application readiness.

75% of organizations surveyed waste over one in three dollars spent in IT development and implementation annually as a result of poor requirements maturity.

–Keith Ellis, Business Analysis Benchmark—The Path to Success, IAG Consulting

The requirements traceability matrix (n x n) and reporting is available to help identify broken links between requirements and help identify dependencies between requirements and cut down on the definition of wasted requirements.

### Manage the impact of change

Requirements often change during the definition phase and sometimes even during the delivery phase. A change in a requirement can have a significant impact on other requirements and in turn, code and tests. The change management process within HP Requirements Management identifies and notifies the relevant personnel when a requirement is changed so they can review and/or approve the change. An impact analysis report can also be viewed to help identify other requirements and tests affected by the change, providing broader visibility.

### Align testing priorities based on requirement's priority and risk

No QA organization can test every requirement as there just is never enough time. HP Requirements Management includes risk-based quality management, so that you can improve your testing effort based on an objective risk assessment of each requirement. This allows you to make informed decisions to align your test strategies with the most important requirements and those that pose the greatest risk to business success.

### Reuse and share application requirements

With HP Requirements Management, you can store requirements in a shared library, allowing multiple business units to contribute to and reuse requirements assets. Requirements can be reused “as is” or modified by creating a new version for each project. This flexibility reduces duplication, and supports compliance requirements by mandating that specific requirements be used to enable regulatory or process compliance.

### Manage requirements for Agile development

HP Requirements Management solves the challenges faced when managing requirements in an Agile world. With less time for business analysts to prepare requirements, HP Requirements Management supports BA's in delivering requirements in the form of user stories, epics, or themes with “just enough” detail to enable development and QA to consume them for each sprint. Tasks for each user story are managed as part of the sprint backlog, allowing the user stories to evolve from elicitation through elaboration and management as more details emerge, or business needs and priorities change. User stories can be prioritized using the risk-based quality management capabilities, and linked to tasks, tests, and defects for full traceability. HP Requirements Management enables change impact analysis using version control, baselining, and asset traceability to support requirements changes that are inherent in the Agile methodology.

### Supports your requirements management ecosystem

Through the use of the open API or the HP Application Lifecycle Management Synchronizer tool, you can import your existing requirements data that may reside within third party tools eliminating the need for re-work and in turn accelerates the implementation and adoption of HP Requirements Management. Many of these integrations and extensions have already been created and are available for you through HP and the extensive HP Partner network. The open API also allows for you to build your own customer functionality extensions.

## About HP BTO Application Solutions

HP application solutions help ensure modernization initiatives deliver business outcome instead of failing under the burden of outdated, legacy delivery mechanisms. Where rival solutions mistake the software development lifecycle for a total picture of the application, HP sees core delivery in the context of the complete application lifecycle – from business idea through retirement. Furthermore, by providing unified management and automation solutions, HP does not offer customers simply more tools and integrations but greater simplicity. The result for enterprise application teams is improved predictability, repeatability, quality, and change readiness in both the core and complete lifecycle.

## HP Services

### HP Software Services

#### Better Business Outcomes

HP provides high-quality software services that address all aspects of your software application lifecycle management needs. With HP, you have access to standards-based, modular, multi-platform software coupled with global consulting, education, SaaS, and support services. The wide range of HP professional service offerings help you achieve business outcomes with the right combination of people, process, and technology. These include ALM consulting and center of excellence services, HP Software implementation and education services.

Our HP Software as a Service (SaaS) can help speed your time to value and significantly lower your up-front costs based on our ten years of experience assisting hundreds of customers with SaaS. Our support services range from online self-serve support to proactive mission-critical services—enables you to choose the services that best match your business needs.

For an overview of HP Software Professional Services:  
<http://www.hp.com/go/almprofessionalservices>

For an overview of HP Software as a Service:  
<http://www.hp.com/go/SaaS>

To learn more, visit: [www.hp.com/go/rm](http://www.hp.com/go/rm)

Connect with peers and HP Software experts: [www.hp.com/go/swcommunity](http://www.hp.com/go/swcommunity)

Share with colleagues



### Get connected

[www.hp.com/go/getconnected](http://www.hp.com/go/getconnected)

Current HP driver, support, and security alerts delivered directly to your desktop

© Copyright 2008, 2010 Hewlett-Packard Development Company, L.P. The information contained herein is subject to change without notice. The only warranties for HP products and services are set forth in the express warranty statements accompanying such products and services. Nothing herein should be construed as constituting an additional warranty. HP shall not be liable for technical or editorial errors or omissions contained herein.

Microsoft is a U.S. registered trademark of Microsoft Corporation.

4AA2-3219ENW, Created November 2008; Updated August 2010, Rev. 1

